



REGATTA
PROFESSIONAL

SOFTSHELL XPT

WATER REPELLENT



300 g/m²

3-layer

Pocket

Washable at 40°C

2026 : p. 202
2025 : p. 249

MAIN FEATURES:

Fabric Information

- Warm backed woven Softshell XPT waterproof and breathable 3 layer membrane fabric
- Textured ripstop shoulder panels
- Wind resistant membrane fabric
- Polyester mesh lining
- ATL durable water repellent finish

Special Features

- Inner zip guard
- Foldaway wraparound lined hood with adjuster
- Adjustable cuffs with rubber tabs
- 2 zipped lower and 1 chest pocket
- Internal security pocket
- Inner mobile phone pocket
- Adjustable shockcord hem
- Made using recycled materials



TARIFF CODE: 62014010

SUGGESTED DECORATION

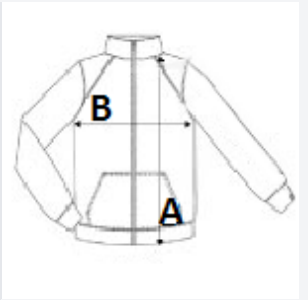
Heat transfer, Screen printing

COUNTRY OF ORIGIN

China

SIZE SPECIFICATION (CM)

	S	M	L	XL	2XL	3XL
Pcs./📦	16	16	16	16	16	16
Body Length (A)	68.00	70.50	73.00	73.00	75.50	75.50
Chest Width (B)	51.00	55.00	59.00	63.00	68.00	72.00
Sleeve Length (C)	78.75	80.00	81.00	82.50	84.50	86.00



COLORS:

■ Black/Black

■ Navy/Black

■ Oxford Blue/Black

■ Classic Red/Black