

RETRA613 WOMEN'S ABLAZE 3 LAYER PRINTABLE SOFTSHELL JACKET



REGATTA
PROFESSIONAL

SOFTSHELL XPT

WATER REPELLENT

MAIN FEATURES

300 g/m²

Fabric Information

Warm backed woven Softshell XPT waterproof and breathable 3 layer membrane fabric

Wind resistant membrane fabric

Atl durable water repellent finish

Special Features

2 zipped lower pockets

Zipped chest pocket

Adjustable cuffs

Ideal for screen, transfer and vinyl printing

Suggested Decoration:

Digital printing (DTF), Embroidery, Flex, Screen printing

Country Of Origin:

China

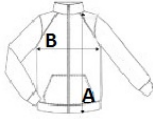


2024 : p. 491



SIZE SPECIFICATION (CM)

	10 (S)	12 (M)	14 (L)	16 (XL)	18 (2XL)	20 (3XL)
Pcs./📦	16	16	16	16	16	16
EU	S	M	L	XL	2XL	3XL
Body Length (A)	64.50	67	67	69.50	69.50	69.50
Chest Width (B)	48	51	53.50	56	59.75	62.25



COLORS:

 French Blue/Navy  Navy/Navy  Seal Grey/Black  Black/Black