

REGATTA
PROFESSIONAL

EXTOLSTRETCH

WARMLOFT

37 g/m²

100% Polyamide

Full zip

Tear-Away Label

MAIN FEATURES:

Fabric Information

100% polyamide with water repellent and cire finish

Extol stretch side panels

Durable water repellent finish to body

Synthetic Warmloft down-touch water repellent insulation

Special Features

Easily compressible

Lightweight fill

Inner zip guard

2 zipped lower pockets

Stretch binding to hood opening, cuffs and hem

This product has no external logo branding

Made using recycled materials



TARIFF CODE: 62014010

SUGGESTED DECORATION

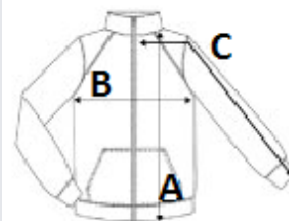
Screen printing, Heat transfer, Embroidery

COUNTRY OF ORIGIN

China

SIZE SPECIFICATION (CM)

	S	M	L
Pcs./📦	8	8	8
Body Length (A)	73.00	73.00	75,5
Chest Width (B)	50.00	54.00	58.00
Sleeve Length (C)	67.00	68.00	69.00



COLORS:

■ Seal Grey/Black