

PR604 'VITALITY' HEALTHCARE TUNIC **Outlet**

MAIN FEATURES
195 g/m²**Fabric**

65% Polyester, 35% Cotton Twill

195gsm

Features

Rounded collar styling with contrast piped edge

Covered front zip fastening

Popper fastening above zip

Curved side pockets with contrast piped edge - 2 PU lined pen pockets

Side and back pleats for fitted styling

Contrast piped detail on sleeve cuff

Side slits

Suggested Decoration:

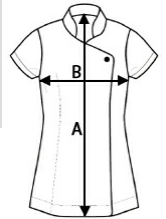
Embroidery, Heat transfer, Screen printing

Country Of Origin:

Bangladesh


SIZE SPECIFICATION (CM)

	XS	S	M	L	XL	2XL	3XL	4XL	5XL
Pcs./	24	24	24	24	24	24	24	24	24
Body Length (A)	78	78.50	79	79.50	80	80.50	81	81.50	82
Chest Width (B)	45.50	48	50.50	53	55.50	58.50	61.50	64.50	67.50


COLORS:
■ Royal/White
 ■ White/Navy