

PR322 WOMEN'S JEANS STITCH DENIM SHIRT



MAIN FEATURES

155 g/m²**Fabric**

100% Cotton Ring-Spun Denim

155gsm

Features

Contrast stitch details

Two chest pockets

Buttoned cuff and buttoned sleeve guard

Curved hem

Modern fit

Suggested Decoration:

Embroidery, Heat transfer, Screen printing

Certifications:**Country Of Origin:**

Bangladesh



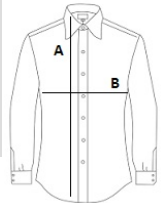
2026 : p. 222

2025 : p. 100



SIZE SPECIFICATION (CM)

| | XS | S | M | L | XL | 2XL | 3XL |
|------------------------|----|-------|----|-------|----|-------|-----|
| Pcs./ | 24 | 24 | 24 | 24 | 24 | 24 | 24 |
| Body Length (A) | 65 | 66 | 67 | 68 | 69 | 70 | 71 |
| Chest Width (B) | 46 | 48.50 | 51 | 53.50 | 56 | 58.50 | 61 |
| Neckline length | 40 | 41.50 | 43 | 44.50 | 46 | 47.50 | 49 |



COLORS:

Black Denim
 Indigo Denim