

PR190 'COLOURS' SWAP & POP APRON - BODY



MAIN FEATURES

195 g/m<sup>2</sup>  
**Fabric**  
65% Recycled Polyester, 35% Cotton

**Features**  
**Apron body designed to work with product [PR191](#)**  
**Fitted with press stud sockets for fixing PR191 accessories in place**  
Centre pocket measuring 30cm wide x 21cm long  
Fabric cloth holder  
Made with recycled polyester

**Suggested Decoration:**  
Embroidery, Heat transfer, Screen printing

**Country Of Origin:**  
Bangladesh

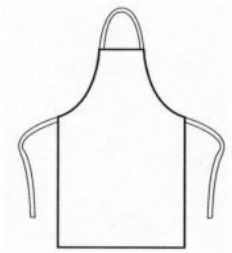


2025: p. 136  
2024: p. 147



SIZE SPECIFICATION (CM)

	U
Pcs./📦	72
Length (A)	86
Width (B)	70



COLORS:

- Black

Olive
- Bottle

Red
- Burgundy

Royal
- Dark Grey

Turquoise
- Khaki
- Navy