



PROACT.®



310 g/m²

Polyester / Elastane

Side seam

Washable at 40°C

2026 : p. 327
2025 : p. 296

MAIN FEATURES:

94% polyester/6% elastane (79% polyester/15% viscose/6% elastane for marl colourways)

Extremely comfortable fabric

Zip fastening

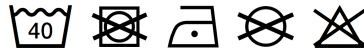
2 heat-sealed zipped front pockets

Cuffs and hem with contrasting elasticated part

Black on all colours and Dark Grey on the Ash Heather

Contrasting zippers

Ideal for wearing with tracksuit trousers PA1009 for a complete Urban Apparel look



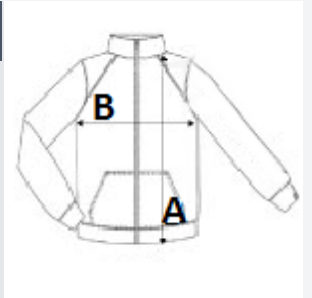
TARIFF CODE: **61103099**

COUNTRY OF ORIGIN

China

SIZE SPECIFICATION (CM)

	XS	S	M	L	XL	2XL
Pcs./📦	15	15	15	15	15	15
Body Length (A)	62.00	64.00	66.00	68.00	70.00	72.00
Chest Width (B)	43.00	46.00	49.00	52.00	55.00	58.00
Sleeve Length (C)	69.00	70.00	72.00	74.00	76.00	77.00



COLORS:

■ Black

■ French Navy Heather

■ Deep Grey Heather