

PROACT.®

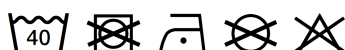


310 g/m² Polyester / Elastane Side seam Washable at 40°C

2026 : p. 327
2025 : p. 296

MAIN FEATURES:

- 94% polyester/6% elastane (79% polyester/15% viscose/6% elastane for marl colourways)
- Extremely comfortable fabric
- Zip fastening
- 2 heat-sealed zipped front pockets
- Cuffs and hem with contrasting elasticated part
- Black on all colours and Dark Grey on Ash Heather
- Contrasting zippers
- Ideal for wearing with tracksuit trousers PA1008 for a complete Urban Apparel look

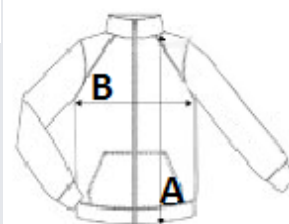


TARIFF CODE: 61103099

COUNTRY OF ORIGIN
China

SIZE SPECIFICATION (CM)

	XS	S	M	L	XL	2XL	3XL
Pcs./📦	15	15	15	15	15	15	15
Body Length (A)	59.00	71.00	73.00	75.00	77.00	79.00	81.00
Chest Width (B)	48.00	51.00	54.00	57.00	60.00	63.00	66.00
Sleeve Length (C)	74.00	76.00	78.00	80.00	81.00	83.00	85.00



COLORS:

- Black
- French Navy Heather
- Deep Grey Heather