

KA9012 KIDS' CREW NECK CHRISTMAS JUMPER **Outlet**

KARIBAN

MAIN FEATURES

260 g/m²

100% acrylic

Straight fit

Gauge 5

Intarsia knit with Christmas motifs on the front

Fully Fashion knit: knitted into shape and assembled on a darning machine

Crew neck

Contrasting 2x2 ribbing at neckline, cuffs and hem

Taped neck that matches the main colour

Elastane in the ribbing on the cuffs and at the bottom of the garment to prevent them from going out of shape

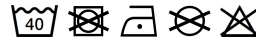
No brand label on the collar, only a size tag for easy decoration

Certifications:



Country Of Origin:

Bangladesh

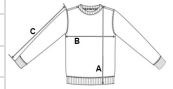


2024 : p. 649



SIZE SPECIFICATION (CM)

	2/4	4/6	6/8	8/10	10/12	12/14
Pcs./	15	15	15	15	15	15
Body Length (A)	36.60	41.40	46.20	51	55.80	60.60
Chest Width (B)	34	35.70	37.40	40	43.50	47
Sleeve Length (C)	35.20	39.40	43.60	48	52.60	57.20



COLORS:

■ Cherry Red