

**JC012** WOMEN'S LONG SLEEVE COOL T



**JustCool**  
AWDis

**MAIN FEATURES**

- 140 g/m<sup>2</sup>
- 100% Polyester
- Relaxed Fit
- AWDis' own lightweight Neoteric™ textured fabric with inherent wickability
- Tear Away Label
- Self-fabric crew neck
- Twin needle stitching detail
- Self-fabric taped back neck
- UPF 30+ UV protection
- Inherent stretch fabric properties
- Set in sleeve design

**Suggested Decoration:**

Heat transfer, Screen printing, Sublimation

**Certifications:**



**Country Of Origin:**

Bangladesh



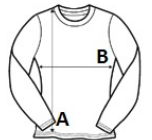
2025 : p. 312

2024 : p. 563



**SIZE SPECIFICATION (CM)**

	<b>XS</b>	<b>S</b>	<b>M</b>	<b>L</b>	<b>XL</b>
<b>Pcs./</b>	50	50	50	50	50
<b>Body Length (A)</b>	65	67	69	71	73
<b>Chest Width (B)</b>	44	46	48	50	52
<b>Sleeve Length (C)</b>	60	61	62	63	64



**COLORS:**

- Electric Pink
- Hot Pink
- Arctic White
- Electric Yellow
- Jet Black
- Sapphire Blue