

135 g/m<sup>2</sup>

Combed cotton

Slim fit

Washable at 60°C

## MAIN FEATURES:

Cotton rich polycotton Oxford fabric with Easy Care finish

Soft feminine collar

Cross stitched mother-of-pearl effect buttons (except Oxford Blue: mother-of-pearl effect white buttons)

Short sleeves with narrow cuffs

Darts at bustline &amp; back panel for a feminine shape

Horizontal last buttonhole

Curved bottom hem



TARIFF CODE: 62063000

## COUNTRY OF ORIGIN

Bangladesh



## SIZE SPECIFICATION (CM)

3XL

Pcs./☐

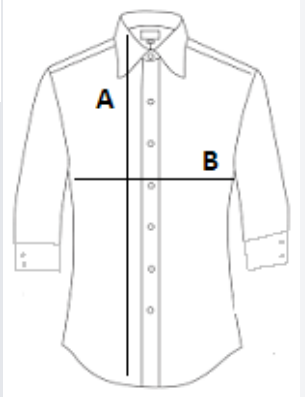
10

Body Length (A)

71.00

Chest Width (B)

60,5



## COLORS:

 Black