

135 g/m²

Cotton / Polyester

Slim fit

Washable at 60°C

MAIN FEATURES:

Cotton rich polycotton Oxford fabric with Easy Care finish

Soft feminine collar

Cross stitched mother-of-pearl effect buttons (except Oxford Blue: mother-of-pearl effect white buttons)

2-button adjustable cuffs

a. Rounded cuffs

b. Additional cufflink buttonholes

Darts at bustline & back panel for a feminine shape

Horizontal last buttonhole

Curved bottom hem



TARIFF CODE: 62063000

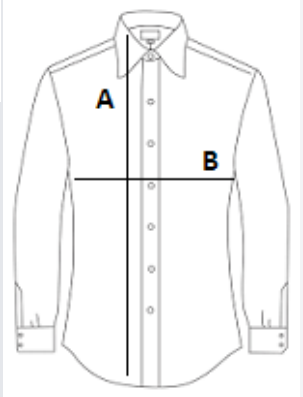
COUNTRY OF ORIGIN

Bangladesh



SIZE SPECIFICATION (CM)

	XS	S
Pcs./📦	10	10
Body Length (A)	65.00	66.00
Chest Width (B)	45,5	48.00



COLORS:

 Silver Moon