

135 g/m<sup>2</sup>

Combed cotton

Washable at 60°C

## MAIN FEATURES:

Cotton rich polycotton Oxford fabric with Easy Care finish

Soft button-down collar

Cross stitched mother-of-pearl effect buttons (except Oxford Blue: mother-of-pearl effect white buttons)

Short sleeves with narrow cuffs

The exclusive B&amp;C Tie-Fix©

Back yoke with 2 overstitched side pleats

Left chest pocket

Inside lap seams for perfect finishing

Horizontal last buttonhole

Mitre-shaped bottom hem side reinforcement

Curved bottom hem



TARIFF CODE: 62052000

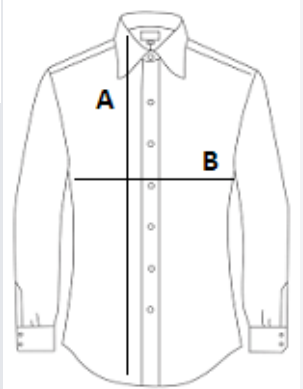


## COUNTRY OF ORIGIN

Bangladesh

## SIZE SPECIFICATION (CM)

	S
Pcs./📦	10
Body Length (A)	80.00
Chest Width (B)	55,5



## COLORS:

 Blue Chip