



135 g/m²

Combed cotton

Washable at 60°C

MAIN FEATURES:

- Cotton rich polycotton Oxford fabric with Easy Care finish
- Soft button-down collar
- Cross stitched mother-of-pearl effect buttons (except Oxford Blue: mother-of-pearl effect white buttons)
- 2-button adjustable cuffs
 - a. Rounded cuffs & mitre-shaped gauntlets
 - b. Additional cufflink buttonholes
- The exclusive B&C Tie-Fix©
- Back yoke with 2 overstitched side pleats
- Left chest pocket
- Inside lap seams for perfect finish
- Horizontal last buttonhole
- Mitre-shaped bottom hem side reinforcement
- Curved bottom hem



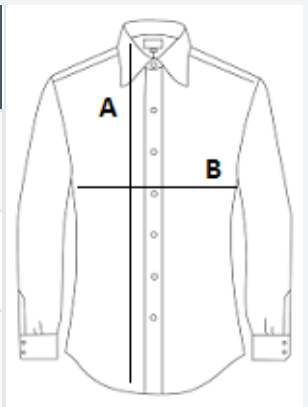
TARIFF CODE: **62052000**



COUNTRY OF ORIGIN
Bangladesh

SIZE SPECIFICATION (CM)

	S	M
Pcs./📦	10	10
Body Length (A)	80.00	81.00
Chest Width (B)	55,5	58.00



COLORS:

- Black
- Blue Chip
- Silver Moon
- White