



280 g/m²

Cotton / Polyester

Side seam

Tear-Away Label

2026 : p. 457
2025 : p. 387

MAIN FEATURES:

- 80% Ringspun Cotton/20% Polyester
- Standard fit
- Twin needle stitching detail
- Double fabric hood with contrast inner
- No drawcords – to comply with EU regulation
- Kangaroo pouch pocket
- Brushed inner fleece
- Ribbed cuffs and hem
- Tear away label
- 100% cotton faced fabric

TARIFF CODE: **61102091**

SUGGESTED DECORATION

DTG, Embroidery, Heat transfer, Screen printing

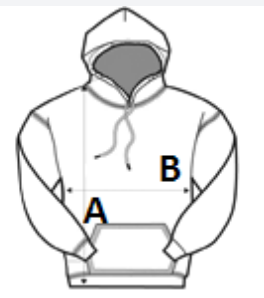
COUNTRY OF ORIGIN

Pakistan



SIZE SPECIFICATION (CM)

	3/4	5/6	7/8	9/11	12/13
Pcs./📦	24	24	24	24	24
Body Length (A)	44.00	48.00	52.00	57.00	62.00
Chest Width (B)	39.00	41.00	43.00	46.00	49.00
Sleeve Length (C)	37.00	40.00	43.00	47.00	51.00



COLORS:

- Jet Black/Fire Red
- Jet Black/Gold
- Jet Black/Heather Grey
- Jet Black/Hot Pink
- Jet Black/Orange Crush
- New French Navy/Fire Red
- New French Navy/Heather Grey
- New French Navy/Sky Blue
- Sapphire Blue/Heather Grey
- Forest Green/Gold
- Heather Grey/Fire Red
- Heather Grey/French Navy
- Baby Pink/Arctic White
- Hot Pink/French Navy
- Purple/Sun Yellow
- Burgundy/Gold
- Fire Red/Jet Black