

AAHVT3370 WOMEN'S HEAVY TERRY DANCE TOP Outlet



American Apparel®

MAIN FEATURES

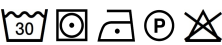
- 498 g/m²
- 498.0 G/SqM
- 71% Cotton, 29% Polyester
- ¾" single needle topstitched collar
- Cropped body
- Raglan sleeveless construction
- Raw finish at armholes and bottom hem
- Side seam
- Double-satin razor label

Suggested Decoration:

Embroidery

Country Of Origin:

China

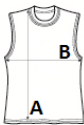


2024 : p. 177



SIZE SPECIFICATION (CM)

	XS/S	M/L
Pcs./	48	48
Body Length (A)	46	48
Chest Width (B)	53	58



COLORS: