

RETRA651 SANDSTORM - RIPSTOP SOFTSHELL



REGATTA
PROFESSIONAL



SOFTSHELL

WATERREPELLENT

HAUPTEIGENSCHAFTEN

290 g/m²**Fabric Information**

Hardwearing warm backed woven stretch ripstop Softshell fabric

Durazone polyamide overlays at wear points for added strength and durability

AtI durable water repellent finish

Special Features

Reflective trim to front and back

Inner zip guard

Adjustable cuffs with rubber tabs

2 zipped lower pockets and 1 zipped chest pocket

Adjustable shockcord hem

Dekorationsvorschläge:

Stickerei, Wärmepresse, Siebdruck

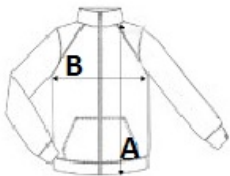
Ursprungsland:

China



GRÖSSENANGABE (CM)

	S	M	L	XL	2XL	3XL
Stck./📦	16	16	16	16	16	16
Körperlänge	69	71	74	74	76	76
Brustweite (B)	53	56	58	62	66	70
Ärmellänge hinten Mitte (C)	79	80	81	83	84	86



FARBEN:

Black

Navy

Seal Grey